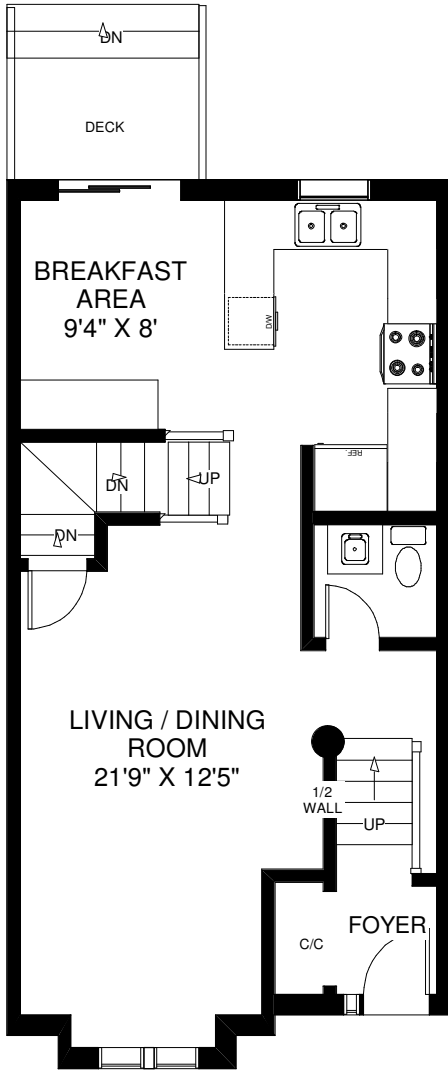


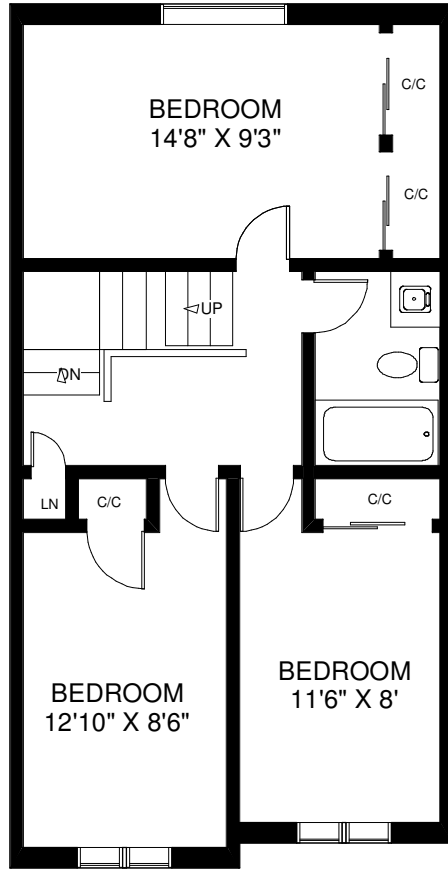
WALK DN TO  
PATIO



MAIN FLOOR  
APPROXIMATELY 630 SQ FT

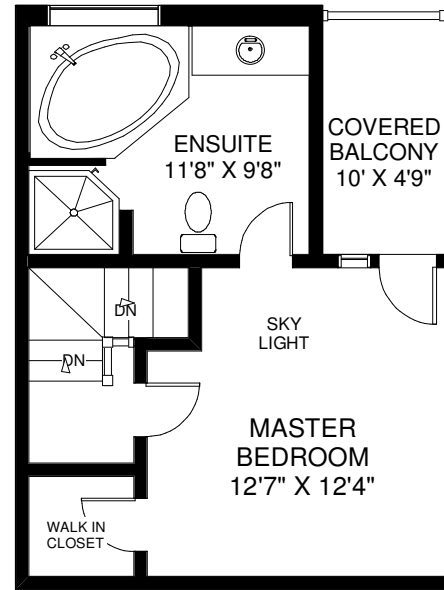
CEILING HT 8'

## 19 SKEENS LANE TH #6



SECOND FLOOR  
APPROXIMATELY 620 SQ FT

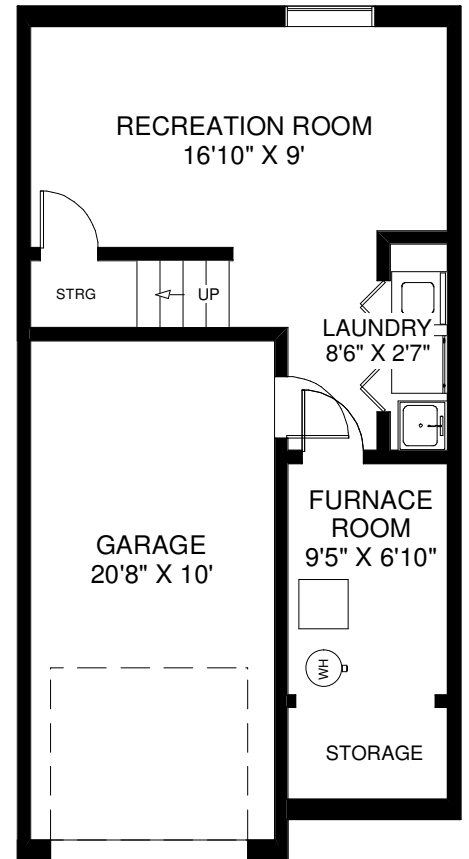
CEILING HT 8'



THIRD FLOOR  
APPROXIMATELY 375 SQ FT

CEILING HT 8'

Note: Measurements & Calculations are approximate.  
Provided as a guideline only.



LOWER FLOOR  
APPROXIMATELY 400 SQ FT

CEILING HT 8'