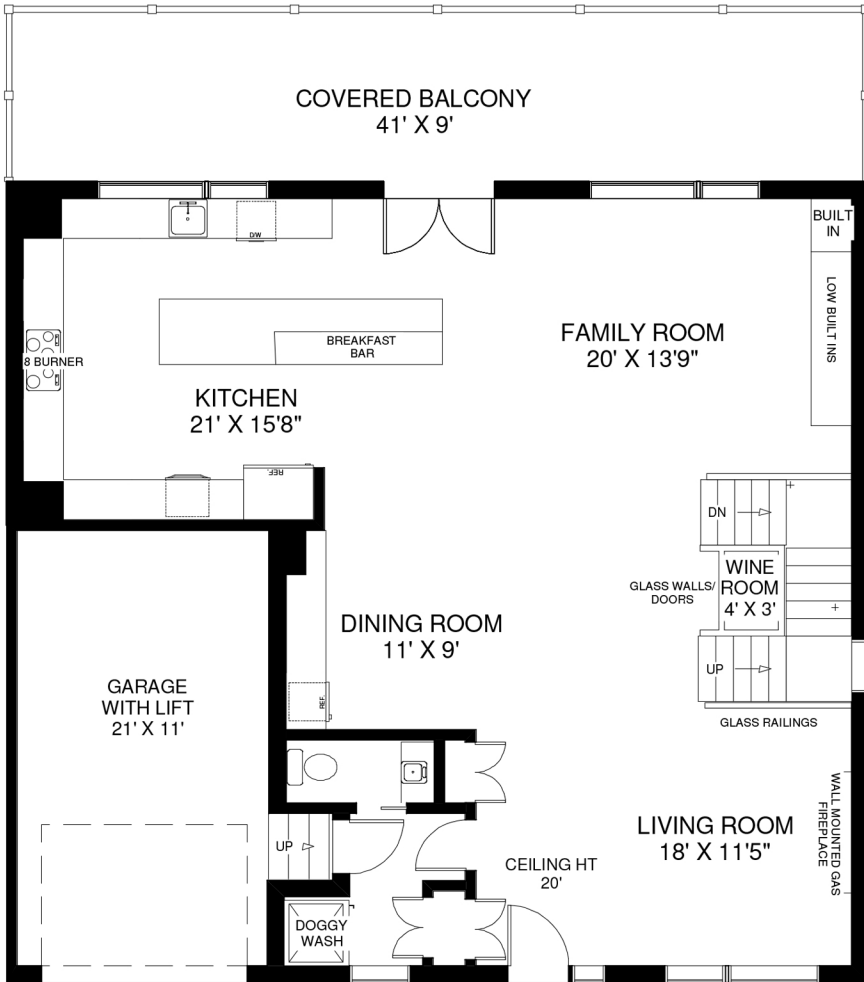


# 59 RIVERVIEW HEIGHTS



CEILING HT 10'  
**MAIN FLOOR**  
 APPROXIMATELY 1,400 SQ FT

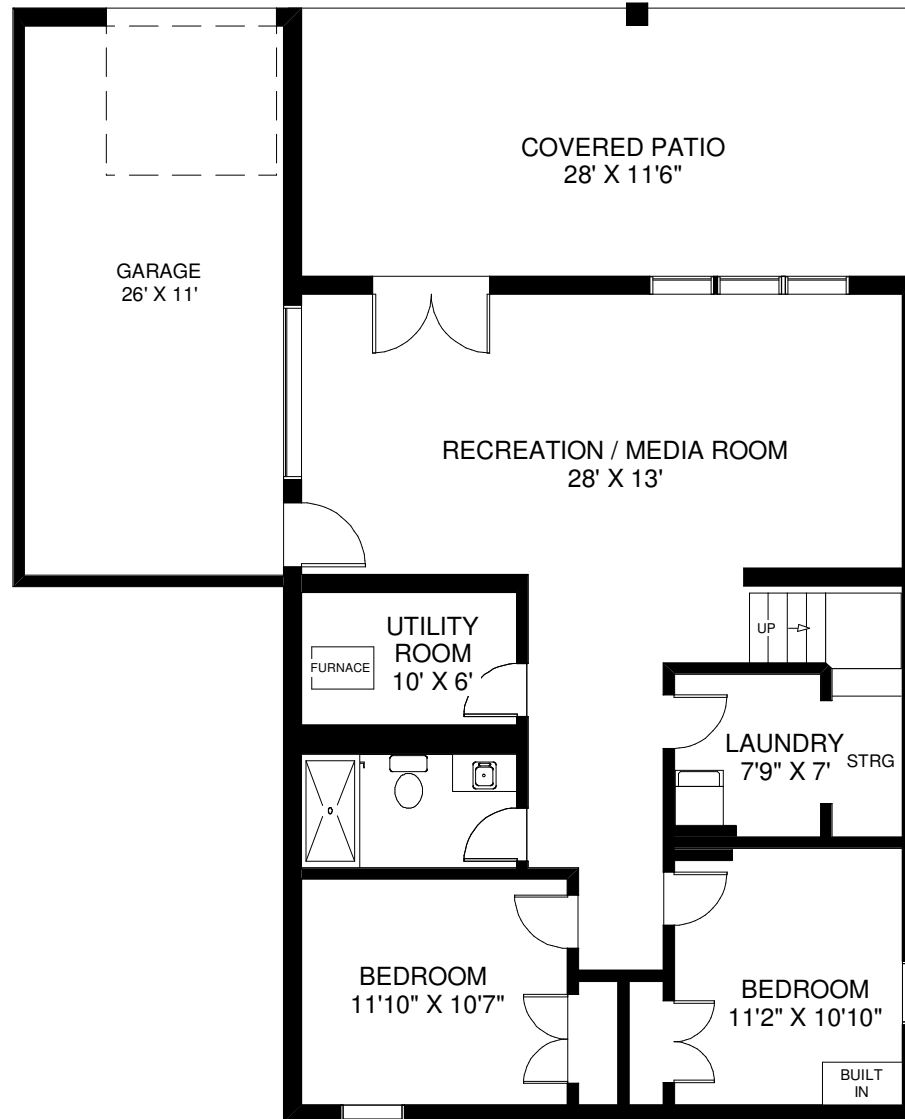


CEILING HT 9'  
**SECOND FLOOR**  
 APPROXIMATELY 1,700 SQ FT



Note: Measurements & Calculations are approximate. Provided as a guideline only.

# 59 RIVERVIEW HEIGHTS



CEILING HT 7'

LOWER FLOOR  
APPROXIMATELY 1,200 SQ FT

Note: Measurements & Calculations are approximate. Provided as a guideline only.